



AAVYAN, OPP. SUBHLAXMI TOWER, NR. BANK OF BARODA,  
NARANPURA, AHMEDABAD 380013

☎ 63560 02020 ✉ bsainfrallp@gmail.com



RERA : PR/GJ/AHMEDABAD/AHMEDABAD CITY/AUDA/MAA11596/150423  
WWW.GUJRERA.GUJARAT.GOV.IN



aura of premium homes

This beautifully planned aavyan will exude an aura of premium homes where families will be privileged to live. Open your eyes every day to real luxury, to a feeling that you have respectfully earned and that is exclusive to you and your loved ones. Set out each day to pursue your every whim and achieve what's next on your dream list.

3 BHK  
premium living

---



aavyan



infinite way of an opulent lifestyle



Prefer  
EXTRA-ORDINARY  
beyond your  
expectations

Luxury does not lie in opulence and grandeur for everyone to see because this home stands as an ode to you - a luxury that reflects your lifestyle, accomplishments, and personality throughout.





For your gracious presence



# 25+ MODERN AMENITIES



- |   |   |  |   |   |   |
|---|---|--|---|---|---|
| <br>MULTIPURPOSE COURT | <br>LANDSCAPE GARDEN                 | <br>SENIOR CITIZEN AREA | <br>CHILDREN PLAY AREA           | <br>INDOOR GAMES   | <br>GAZEBO                 |
| <br>INFORMAL SITOUT    | <br>PLAY EQUIPMENT                   | <br>ALLOCATED PARKING   | <br>JOGGING TRACK                | <br>GYM            | <br>NO VEHICLE ZONE        |
| <br>GATHERING LAWN     | <br>ELECTRIC CHARGING POINTS FOR CAR | <br>LIBRARY             | <br>WELL DESIGNED ENTRANCE FOYER | <br>DROP OFF ZONE  | <br>INBUILT GAS CONNECTION |
| <br>CCTV CAMERA        | <br>STRETCHER LIFTS                  | <br>FIRE SAFETY         | <br>COMMON SOLAR SYSTEM          | <br>GATED SECURITY | <br>VIDEO DOOR PHONE       |



GROUND FLOOR





FIRST FLOOR







SECOND FLOOR





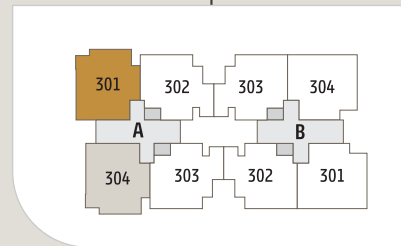
TYPICAL  
FLOOR





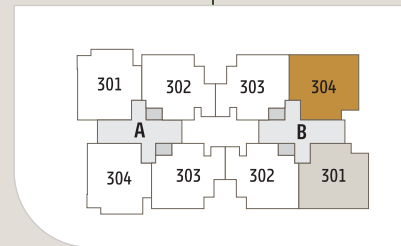
13TH  
FLOOR  
PENTHOUSE





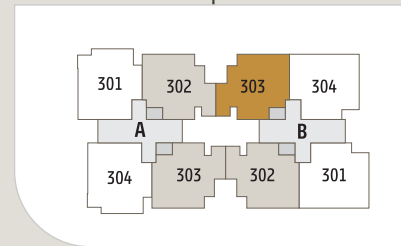
3 BHK - BLOCK-A





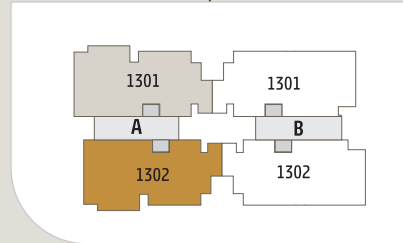
3 BHK - BLOCK-B





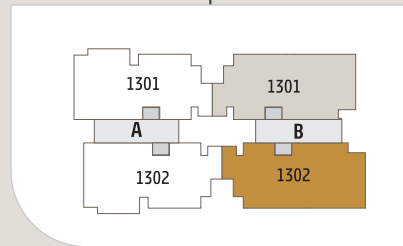
3 BHK - BLOCK-A,B





PENTHOUSE - BLOCK-A





PENTHOUSE - BLOCK-B









#### STRUCTURE

- Safe & sound quality controlled R.C.C. frame structure with best material component
- Earthquake resistant design

#### WALL FINISH

- INTERNAL : Finished mala plaster with putty finish
- EXTERNAL: Double coat sand face plaster with acrylic paint

#### FLOORING & WALL TILING

- Premium quality vitrified tiles in living, dining, bed rooms, kitchen & wash area
- Granite platform in kitchen with S.S. sink
- Designer tiles up-to lintel level above kitchen platform & toilets
- China mosaic in all terrace

#### DOORS & WINDOWS

- Main door with wooden frame & safety locks
- Internal doors with wooden frame, flush shutter & safety locks
- Superior quality hardware fittings
- Aluminum sliding window with granite stones

#### ELECTRICAL WORK

- 3-phase Premium quality concealed ISI copper wiring
- Premium quality Distribution board with separate MCB & ELCB
- ISI marked standard modular switches
- Sufficient electrical points in all areas
- T.V. wiring conduit
- Broadband net connection conduit

#### WALL PAINT

- Long lasting & weather resistant acrylic paint on all external walls
- All internal walls with water resistant smooth cement base putty finish

#### PLUMBING & SANITATION

- Premium quality sanitary ware & plumbing fixtures

#### PIPE & FITTINGS

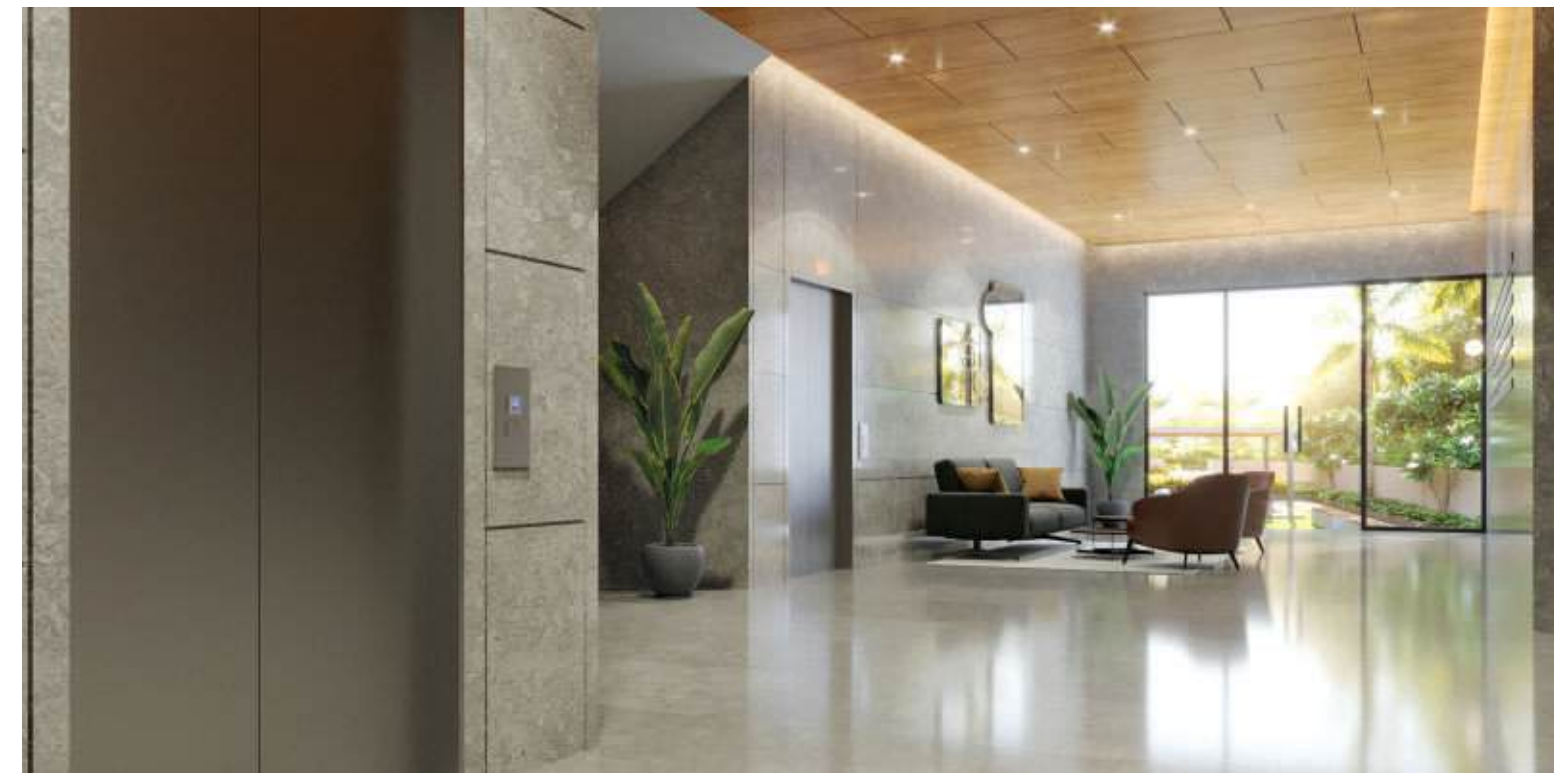
- Premium quality CPVC / UPVC fittings

#### HVAC

- Provision for air conditioning in all internal areas.

#### LIFT & FOYER

- Well designed foyer with 2 automatic stretcher lifts in each block

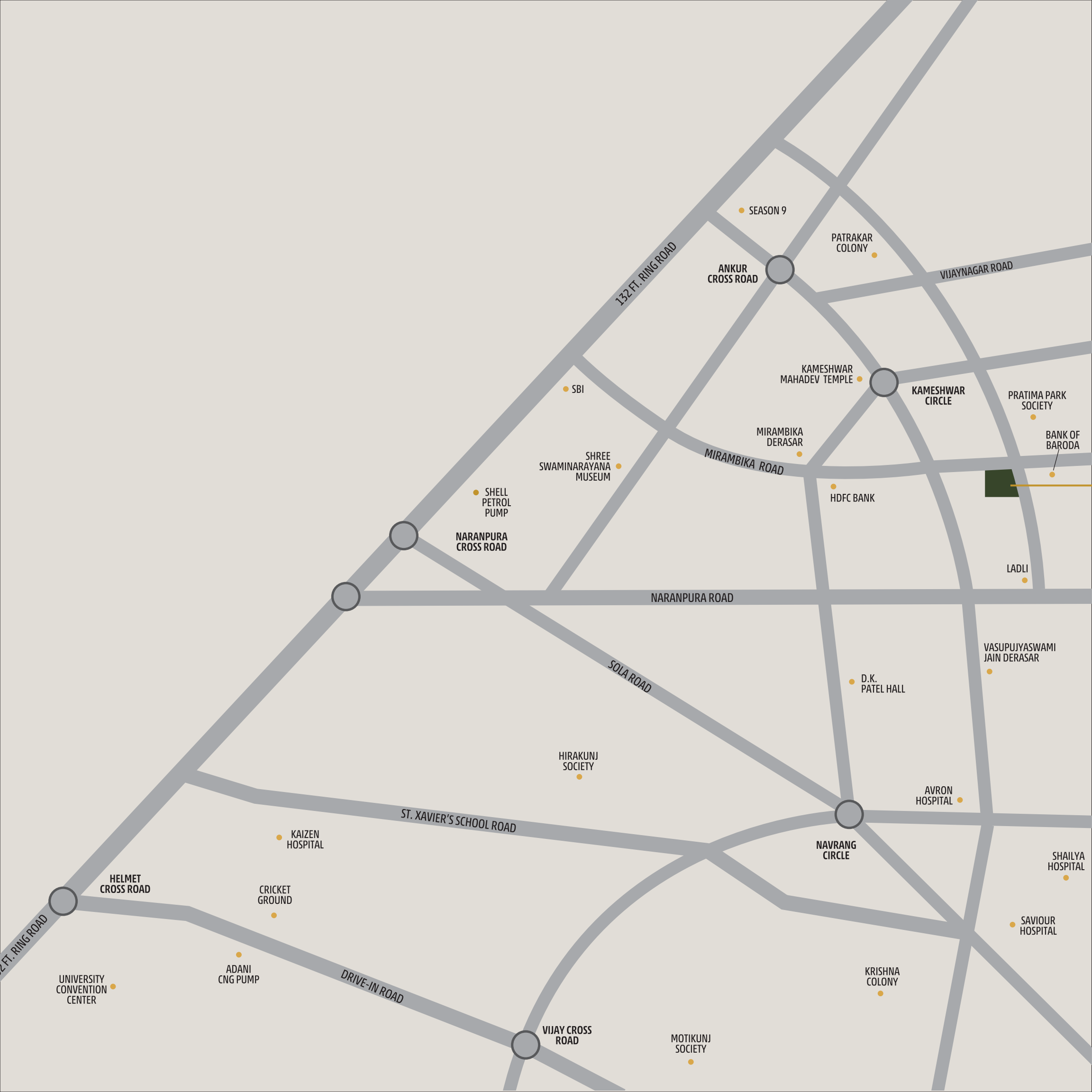




live where  
every corner  
is connected

← LADLI

MIRAMBIKA →



A PROJECT BY



BALAJI SOLITAIRE AARYA INFRA LLP

ARCHITECT : ADS ARCHITECTS PVT LTD.

ELECTRIC : APOORVA PARIKH

STRUCTURE : SETU INFRASTRUCTURE

PLUMBING : AQUA DESIGNS PVT LTD

Terms & Conditions :- All the architectural and interior images in the brochure, are merely simulated interpretations using computer graphics to enhance the customer understanding and are not actual images. \* The colour and general appearance of the flooring, wall, tiles, sanitary ware & fittings walls, ceilings, windows, doors, internal roads, trees, shrubbery etc, shown in the simulated computer graphics images are taken from the object libraries for the purpose of presentation only. The prospective buyers of the concerned property are advised to refer to the specifications mentioned in the brochure. Additional amenities and or utilities not mentioned or shown in the brochure but may be required as per the law, should be deemed to be forming part of the project by the purchaser. \* All Furniture including wardrobes, other sofa furnishings inter-alia curtains, mattresses, bed linen, upholstery etc., lights, other electrical fixtures and appliances like air conditioners, refrigerators, TVs, telephones, laptops etc., any of the equipment, household accessories, inter-alia crockery, cutlery, rugs, carpets, decorative pieces, wall hangings, wall papers, utensils etc., apparels and all other consumable and movable items shown in the simulated images do not form part of the sale of any property by the developer. \* All rights reserved with the developers to make any changes in the project and all the members shall abide by such changes. \* GST, Stamp duty, registration charges or any other charges and taxes as & when levied by government or any of its body shall be borne by purchaser/buyer/legal possession holder. \* This brochure is not to be treated as part of the legal document and is for an easy display of the project. \* Subject to Ahmedabad Jurisdiction only. \* The Brochure is for restricted private circulation only and is not to be considered as a legal document with obligations for specific performance, it is meant for the purpose of conceptual presentation only.